

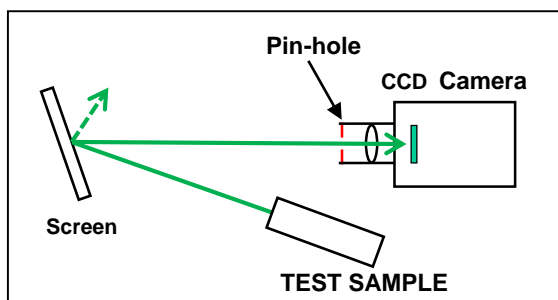


Dr. SPECKLE[®]

Speckle Contrast Measurement System

Diagnosis of Your Projector

- ✓ **Quantitative Evaluation**
- ✓ **Powerful Analysis**
- ✓ **Easy Operation**
- ✓ **Application Examples**
- ✓ **Laser displays, HUD/HMD, Illuminations, etc.**



Schematics of Optical System

Dr. SPECKLE[®] series

Type1



Type2



Type3



Tentative Specification

Model Name	Type 1	Type 2	Type 3
Model Number	SM01VS06	SM01VS08	SM01VS09
Dimensions	749 × 340 × 284 mm	585 × 205 × 190 mm	235 × 157 × 168 mm
Weight	25 Kg	7 Kg	6 Kg
Features	All - in one	Flexible	Portable
Sample Luminous Flux	> 10 lm		
Pin-hole Diameter	0.8 / 1.0 / 1.2 / 1.5 mm		
Speckle Contrast Definition	$C = \sigma / \bar{I}$		
Measurement Signal of Image	Still Image, RGB Primaries		

OXIDE

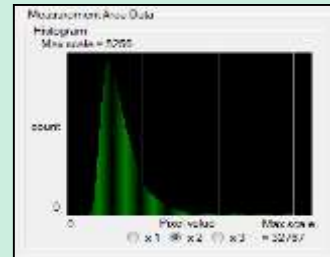
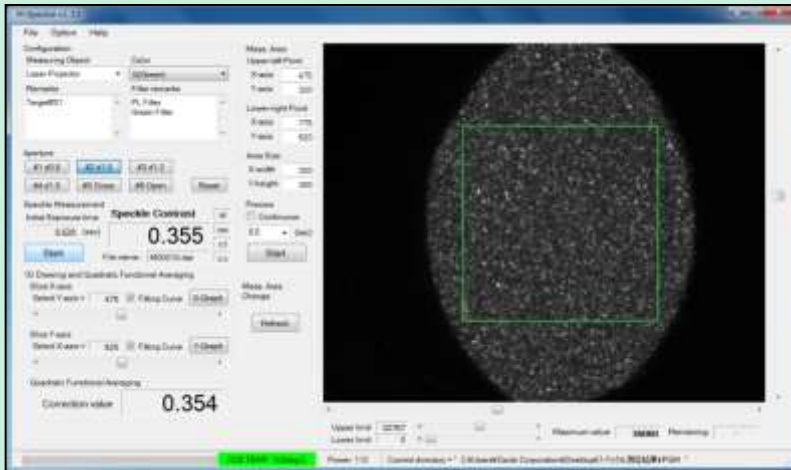
Oxide Corporation

1747-1 Makihara, Mukawa, Hokuto, Yamanashi 408-0302 JAPAN

Tel: +81-551-26-0022, Fax: +81-551-26-0033

Sales@opt-oxide.com, <http://www.opt-oxide.com>

Sample of "M-Speckle" Console Window



Area	Speckle Contrast	Correction value	File name
18 00 20	0.352	0.361	AM0020.auf
18 45 10	0.363	0.372	AM0021.auf
18 45 41	0.370	0.384	AM0021.auf
18 47 31	0.374	0.392	AM0020.auf
18 48 21	0.366	0.384	AM0020.auf
18 49 18	0.368	0.387	AM0020.auf
18 49 48	0.361	0.381	AM0020.auf

New Features of Analysis

Premium edition

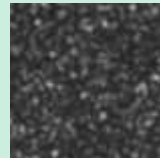
FFT Analysis for reduction of periodic pattern

Calculation of average speckle size

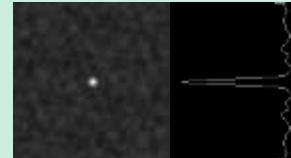
Original image



$C_s = 0.099$



Original image

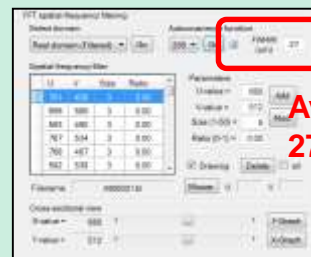


Normalized Autocovariance

Processed image



$C_s = 0.054$



Average size 27 um

Customization

✓ We can tailor to your measurement Optical Systems, Jigs, Stages, Software, etc.

OXIDE

Oxide Corporation

1747-1 Makihara, Mukawa, Hokuto, Yamanashi 408-0302 JAPAN

Tel: +81-551-26-0022, Fax: +81-551-26-0033

Sales@opt-oxide.com, <http://www.opt-oxide.com>

Contents are things of 1-May-2015.