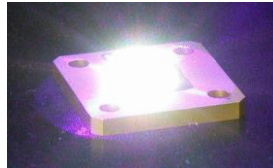
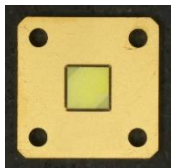


EPOCH (MGC)

Unrivaled New Phosphor for the Brightest White-Light

Applications

- ✓ **Automobile headlight**
- ✓ **Projector**
- ✓ **Solid-state illumination**



EPOCH(MGC) Device



What's EPOCH? EPOCH is the BEST Phosphor

EPOCH is a melt growth composite (MGC) consisted of single crystalline Ce:YAG phosphor and light guide. Two materials are continuously tangled with each other without any organic binder, air space, nor boundary layer. Yellow light emitted from Ce:YAG, which is excited by blue LEDs and LDs, is effectively guided via transparent light guide. Thus, white light emission is obtained in the most efficient way.

EPOCH DEVICE consists of EPOCH and a heat sink, specially designed by the expertise of OXIDE for superior heat dissipation. EPOCH has high thermal conductivity and **thus EPOCH DEVICE can** withstand high power irradiation of blue LD.

Advantages

- ✓ **High Thermal Conductivity**
- ✓ **Ultra Brightness**
- ✓ **High Durability**

Characteristics of Phosphors

Ce:YAG structure	Single crystal	EPOCH
Color coordinates (x, y)	(0.417, 0.556)	(0.426, 0.550)
Luminous efficacy (lm/W)	< 100	> 100
Thermal conductivity (W/mK)	13	~20
Heat resistance	strong	strong

OXIDE

Oxide Corporation

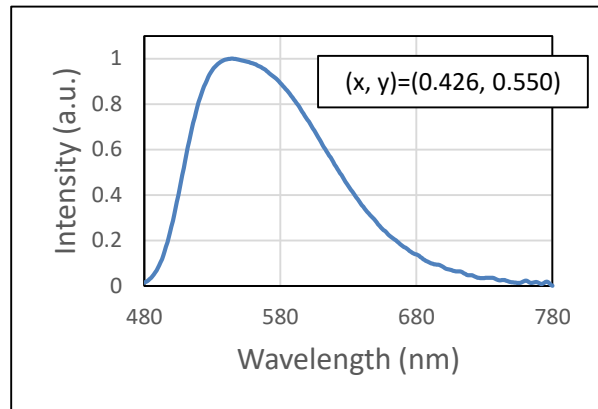
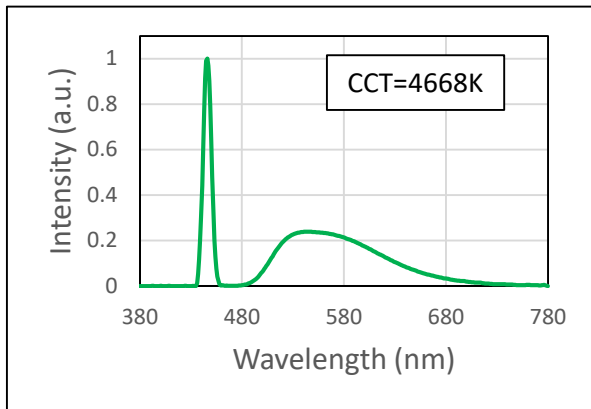


1747-1 Makihara, Mukawa, Hokuto, Yamanashi 408-0302 JAPAN

Tel: +81-551-26-0022, Fax: +81-551-26-0033

Sales@opt-oxide.com, <https://www.opt-oxide.com>

Photoluminescence of EPOCH



Excitation wavelength : 452 nm

Principle of EPOCH phosphor

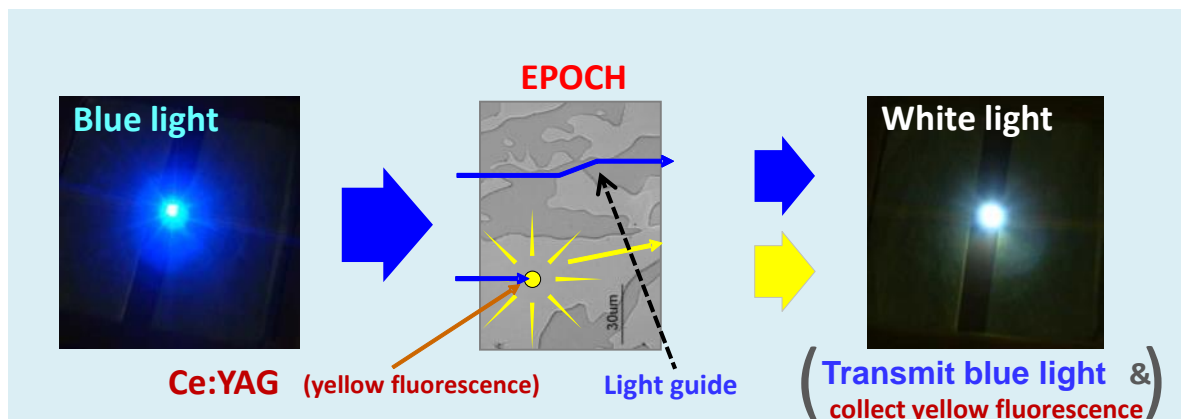
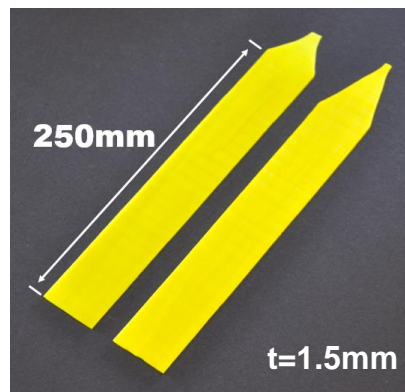


Image of Phosphor Ingot (Ribbon Type)



EPOCH (MGC)

OXIDE

Oxide Corporation



1747-1 Makihara, Mukawa, Hokuto, Yamanashi 408-0302 JAPAN

Tel: +81-551-26-0022, Fax: +81-551-26-0033

Sales@opt-oxide.com, <https://www.opt-oxide.com>